

FELLER

BAUMASCHINEN G. M. B. H.

PEINER

KRANE



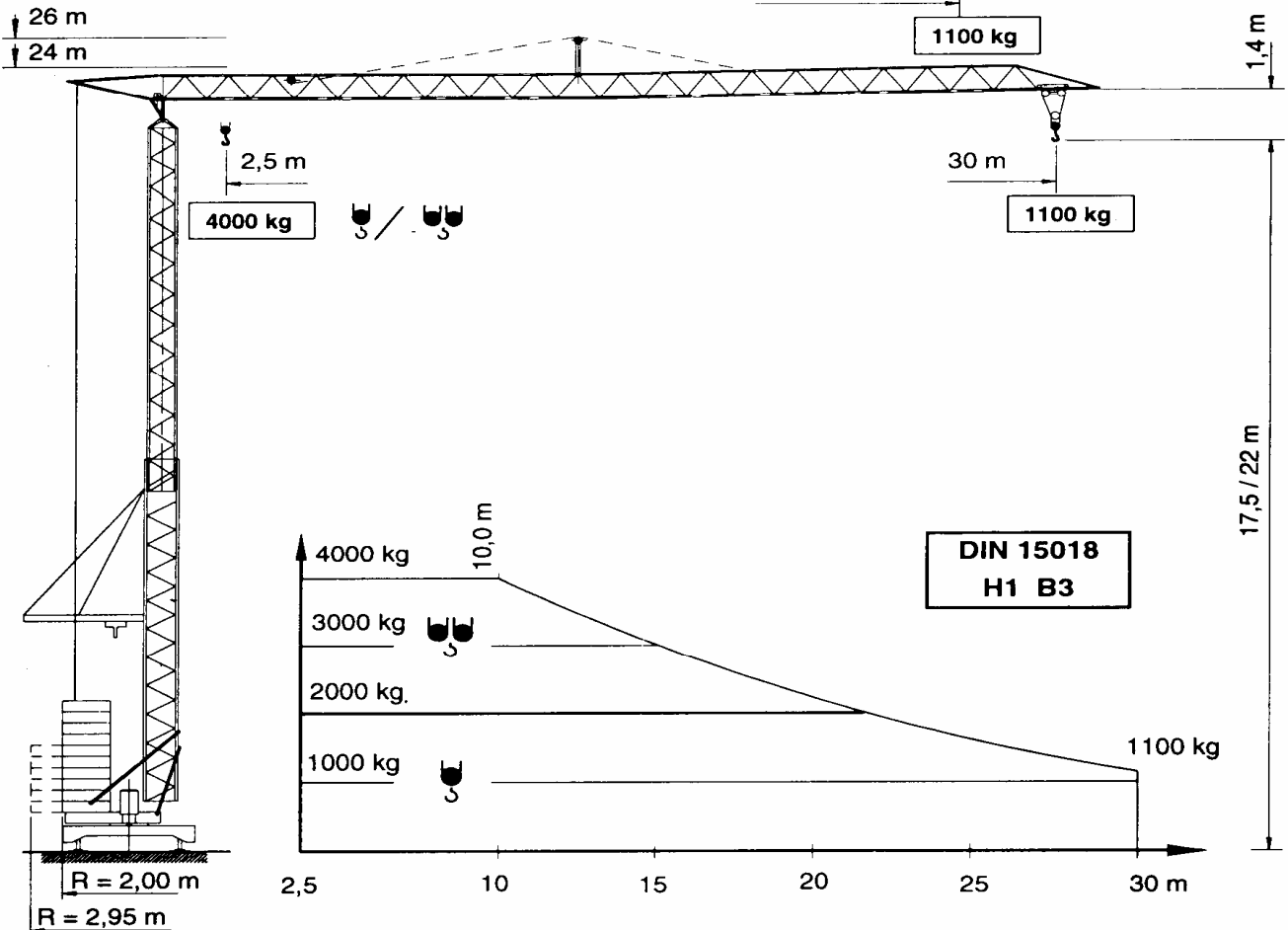
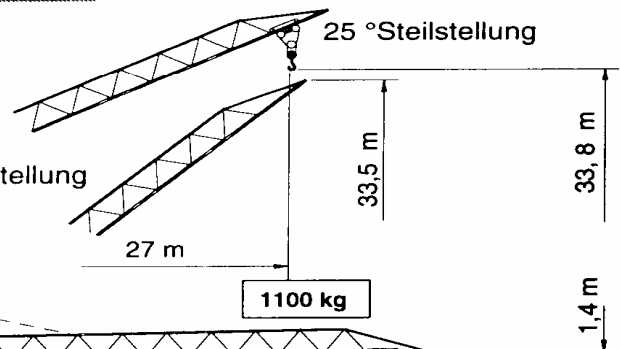
PEINER Schnellmontagekran SMK 204

Fast self erecting tower crane

Grue à montage rapide

Max. Tragfähigkeit Lifting capacity Force de levage	4,0 t
Max. Ausladung Radius Portée	30,0 m
Max. Nutzlastmoment Load moment Couple de charge utile	390 kNm






"City-Kran"



PEINER Schnellmontagekran SMK 204

Fast self erecting tower crane Form 33 (BGL)
Grue à montage rapide City-Kran

Geschwindigkeiten / Speeds / Vitesses

Type	S						/ S			Steilstellung 25° jib-inclination 25°/ position 25°			Motorleistung Power Puissance KW	
				m/min	kg		m/min	kg		m/min	kg			
PU 9-20/3				45	1100		22	2200		22	1100	5	1100	9,0
				22	2000		11	4000		2,5	5			
PU S1-40/2	v = 45 / 22 m/min (Steilstellung v = 22 m/min.; 1100 kg)											4,0		
K 2-33/1	v = 20 m/min											1,5		
K SRA 40/3	n = 0 → 0,85 min ⁻¹											3,0		
400 V / 50 Hz / 3 Ph	Anschlußleistung / Connected power / Puissance installée											~ 17,5		

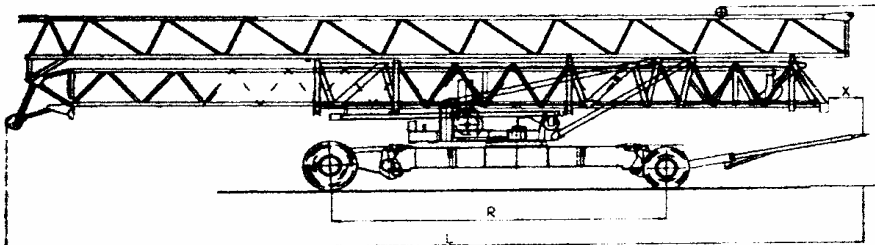
Gewichte + Maße / Weights and sizes / Poids et mesures

	Standard	City-Ausf.	Kabine Sichthöhe Height of sight from drivers cabin Hauteur de vue de la cabine	m	~ 9
Konstruktionsgewicht Construction weight Poids de construction	= 11 000				
Gegengewicht Counter weight Contrepoids	16 000	20 000	Kabelquerschnitt Cable cross section Section du câble	mm ²	4 x 6
max. Eckdruck max. wheel load Pression max. par galot	160	190			
Spurweite / Radstand Track gauge / wheel gauge Ecartement de voie / Empattement	3,8 / 3,8				
Drehradius Radius of rotation Rayon de rotation	2,95	2,00			

Straßentransport mit KSL

Road transport with KSL

Transport sur route avec KSL



[m]	KSL 14/1	KSL 20/1
B	2,50	2,50
L	15,45	15,30
H	3,70	3,70
R	6,00	6,20
X	0,60	0,50