

# FELLER

BAUMASCHINEN G. M. B. H.

PEINER  
K R A N E

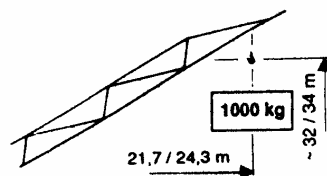


## PEINER Schnellmontagekran SMK 203/1

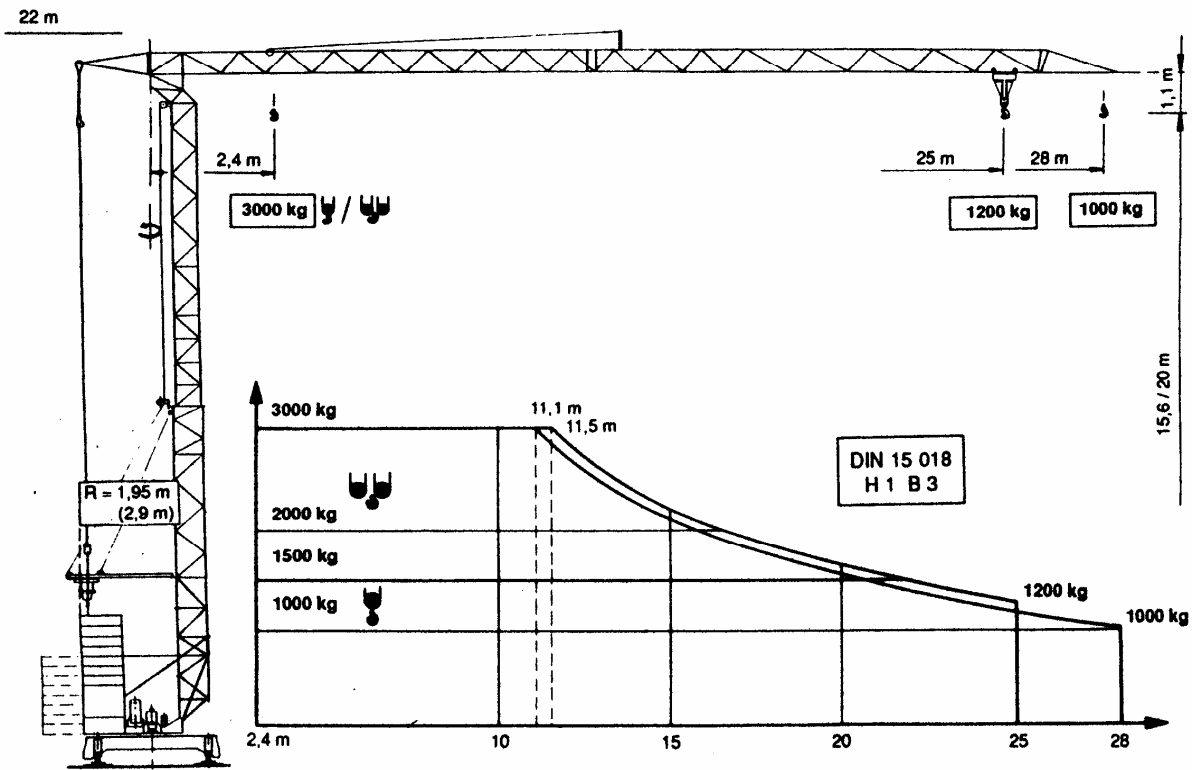
Fast self erecting tower crane  
Grue à montage rapide

Max. Tragfähigkeit Lifting capacity Force de levage	3,0 t
Max. Ausladung Radius Portée	28 m
Max. Nutzlastmoment Load moment Couple de charge utile	345 kNm

30° Steilstellung




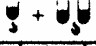
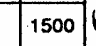



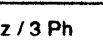
“City-Kran”



**PEINER Schnellmontagekran**  
**Fast self erecting tower crane**  
**Grue à montage rapide**

**SMK 203/1**  
**Form 28 (BGL)**  
**City-Kran**

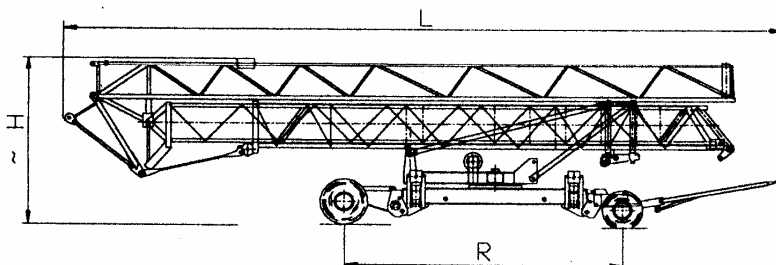
Geschwindigkeiten / speeds / Vitesses

Type						 + 				Motor-Leistung Power Puissance KW
						m/min	kg	m/min	kg	
PU 8/3						40	1000	20	3000	7,5
						20	1500	10		
						5,0 m/min.		2,5 m/min.		
KS 2/3		v = 45/22 m/min. (30° Steilstellung v= 22 m/min.; 1000 kg)								4
FT 1/33		v = 20 m/min.								1,5
DIEO / 40		n = 0 → 0,85 min <sup>-1</sup>								3
380 V / 50 Hz / 3 Ph		Anschlußwert / connection power / Puissance installée								≈ 16 KW

Gewichte + Maße / weights and sizes / Poids et mesures

Konstruktionsgewicht Construction weight Poids de construction	kg	Standard	City-Ausf.	Kabine Sichthöhe Height of sight from drivers cabin hauteur de vue de la cabine	m	≈ 10/18
		8600				
Gegengewicht Counterweight Contre-poids	D CH kg	16 040	21 520	Kabeltrommel (Fahrweg) Cable winder (length of track) Enrouler (longeur de voie)	m	40
		17 920	22 720			
max. Eckdruck max. wheel load Pression max. par galot	KN	141	176	Kabelquerschnitt Cable cross section Section du câble	mm <sup>2</sup>	4 x 6
Spurweite / Radstand track gauge / wheel gauge Ecartement de voie / Empâtement	m	3,2		Schienenprofil Rail profile Profil de rail		S 33/S 49
Drehradius Radius of rotation Rayon de rotation	m	2,9	1,95			

Straßentransport mit KSL · Road transport with KSL · Transport en route avec KSL



mit Teilballast 4,6 to  
straßenfahrbar

[ m ]	KSL 14/1	KSL 20/1
B	2,5	2,5
L	14,7	14,6
H	3,7	3,7
R	5,38	5,63