

FELLER

BAUMASCHINEN G. M. B. H.

PEINER
K R A N E



PEINER

Schnellaufbaukran SMK 201

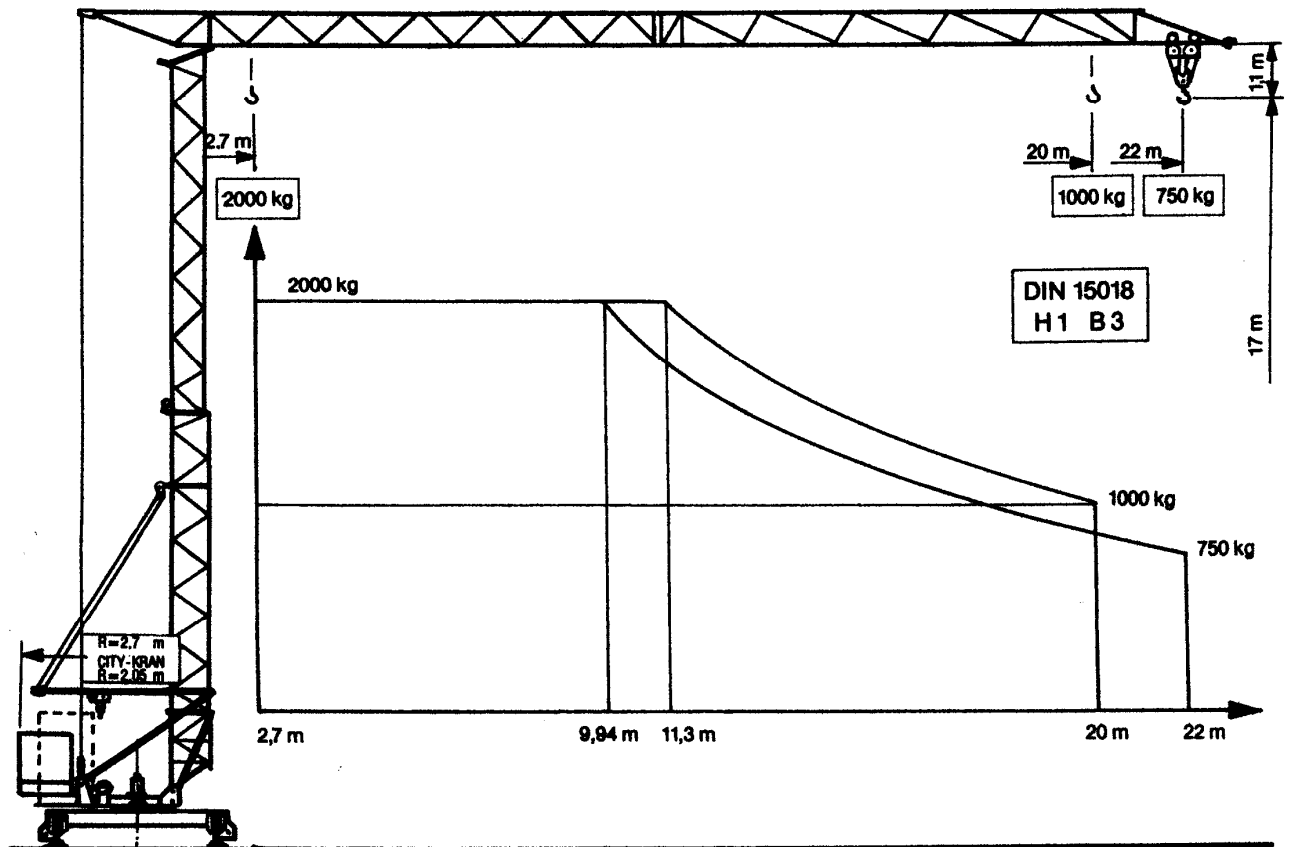
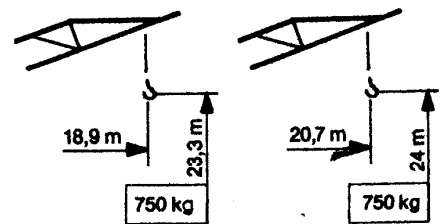
Fast self erecting tower crane

Grue à montage rapide

Max. Tragfähigkeit Lifting capacity Force de levage	2000 kg
Max. Ausladung Radius Portée	22 m
Max. Nutzlastmoment Load moment Couple de charge utile	226 kNm

“City-Kran”

Steilstellung 20°



Peiner Schnellaufbaukran












Peiner fast self erecting tower crane

Grue Peiner à montage rapide

SMK 201

Form 20

Geschwindigkeiten / speeds / Vitesses

Type					kg	Motor- Leistung Power Puissance KW
		m/min.	kg			
HL3/1000				40	1000	PU 7,5
				20	2000	
				5 m/min.		
KL 1/2		v = 30 m/min.				0,75 / (1,5)
FWS 1/25		v = 25 m/min.				1,5
DIEO / 20		n = 0 → 0,9 min ⁻¹				SRA-System 1,0
380 V / 50 Hz / 3 Ph		Anschlußwert / connection power / Puissance installée				~11 (~11,5)

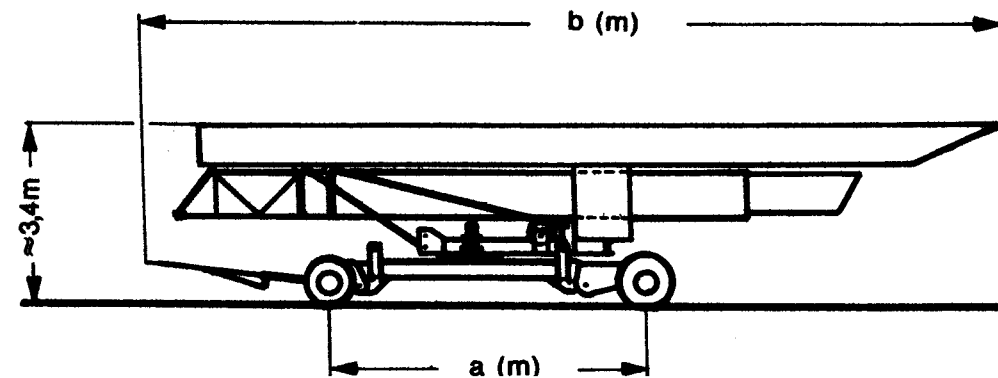
Gewichte + Maße / weights and sizes / Poids et mesures

Konstruktionsgewicht Construction weight Poids de construction	kg	Standard-	City-Ausf.			
		6400				
Gegengewicht Counterweight Contre-poids	kg	(D) 8300	Zentralball. = 2400 + 10150 (D u. CH)	Kabeltrommel (Fahrweg) Cable winder (length of track) Enrouler (longueur de voie)	m	40
max. Eckdruck max. wheel load Pression max. par galot	KN	95		Kabelquerschnitt Cable cross section Section du câble	mm ²	4 x 6
Spurweite / Radstand track gauge / wheel gauge Ecartement de voie / Empattement	m	3,6 / 3,6		Steuerkabel Control cable Câble de commande	m	15
Drehradius Radius of rotation Rayon de rotation	m	2,7	2,05	Schienenprofil Rail profile Rail profil		S33/S49

Straßentransport

Road transport

Transport en route



	Standard-	City-Ausf.	
	Vollballast	Teilballast	
	a	a	b
KSL 14/1	6,14	5,78	14,53
KSD 15	6,32	5,96	14,17
KSL 20/1	6,03		14,17